

GEOTHERMAL ENERGY BASKETS



the earth is our future



Excavation

In a very short space of time by the civil engineering company.



Setting

Minimal space with high energy generation.



Connecting

With modern Pipe – Systems close to your building.



Ready

Geothermal energy in next to no time.

THE ADVANTAGES

- Easy access to heat sources for the brine-water heat pump.
- Also suitable for natural cooling.
- Maintenance-free and extremely efficient.
- Simple authorization procedures.
- Installation in water - and mineral spring areas mostly are also possible.
- Annual complete regeneration through rain and sun.
- No interference with the use of your garden.
- Delivery of complete material requisition by BetaTherm partners in your region.
- Installation instructions and installation support on jobsites by BetaTherm is service possible.

VARIANTS



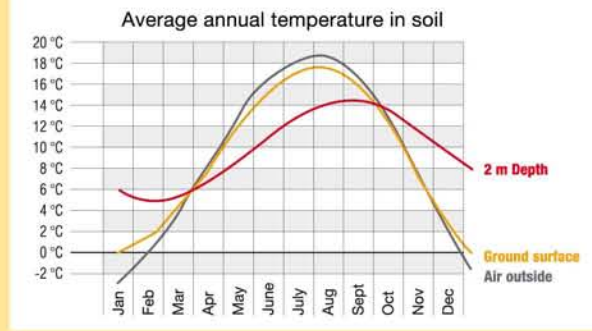
With the different variants of BetaTherm geothermal baskets almost all individual requirements can be realized with peak efficiency.

FACTS

Geothermic always works! Even in cold February days there is a temperature of 5 °C available still in two meters deepness.

This temperature brings a heat pump to a higher temperature level.

With the patented geothermal baskets of BetaTherm you will get the inexhaustible energy from the earth into your house.



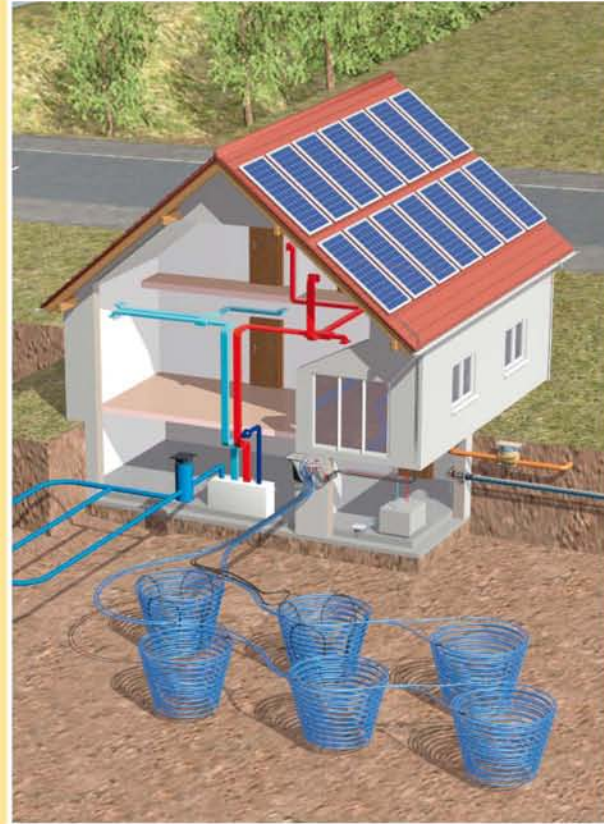
PLANNING

For the supply of a modern family home of approximately 120 - 160 sqm, you need approximately 6 - 9 geothermal baskets.

They ideally should be located in wet substrates, that's the case in more of 90% of all applications.

The geothermal baskets of BetaTherm are immediately available and can be installed at short notice.

Whether private, industrial or commercial, our planning team is capable to dimension your investment tailored to your energy requirement.



REALIZATION

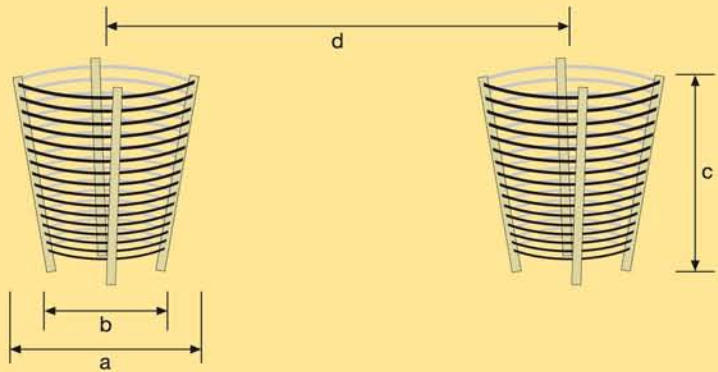
BetaTherm geothermal baskets are designed for the usage at a depth from 1 to 4 meters. The complete system can usually be installed in ONE day only.

The baskets - depending on the type - will be embedded in approximately 2.5 to 4 meters deep square excavations and in-dredged with the existing soil as well as water.

By means of modern connection technique the baskets are then connected among themselves and attached centrally to the building.



| Parameters | EWK BETA - BASIC 32/75 | EWK BETA - ECO 32/150 | EWK BETA - MAXI 32/200 |
|--|---------------------------|--------------------------|----------------------------------|
| Pipe length | 75 m | 150 m | 200 m |
| Diameter (top) (a) | 2.4 m | 2.4 m | 2.4 m |
| Diameter (bottom) (b) | 1.4 m | 1.4 m | 1.4 m |
| Height (c) | 1.2 m | 2.0 m | 2.7 m |
| Distances of pipes | 114 mm | 114 mm | 114 mm |
| Basket volume | 3.5 cbm | 6.1 cbm | 8.1 cbm |
| Distance between baskets (center to center) (d) | 5.0 m | 6.0 m | 7.0 m |
| Required space each basket in row systems | 12-15 sqm | 15-20 sqm | 20-25 sqm |
| Required space each basket in parallel systems | 25-30 sqm | 35-40 sqm | 50 sqm |
| Installation design each row | maximum 3 baskets | maximum 2 baskets | directly single to the collector |
| Brine volume | 42 ltr | 84 ltr | 108 ltr |
| Capacity each basket | 0.7-1.0 kW | 1.1-1.5 kW | 1.6-2.0 kW |
| Adjust the pipe | Supports made by PU-Foam | Supports made by PU-Foam | Supports made by PU-Foam |
| Integrated forward – and backward connection lines | 3-4 m | 20 m | 25 m |



Imprint

BetaTherm GmbH & Co. KG
 GeothermalSystems
 Wittwaisstraße 88
 D-88239 Wangen
 Phone: +49 (0)75 22-797 509
 Fax: +49 (0)75 22-771 615
 Mail: info@betatherm.de
 Web: www.betatherm.de

Firm stamp

